

# Tradewinds

RENÉE NANNEMAN



Tradewinds Tide Quilt designed  
by: **Renée Nanneman**  
Quilt Size: **66" x 82"**  
Skill Level: **Intermediate**

# Tradewinds Tide Quilt

Introducing Andover Fabrics new collection: **TRADEWINDS** by Renée Nanneman

Quilt designed by Renée Nanneman

Quilt finishes 66" x 82"

12 Blocks: 16" x 16"

*The mixture of checks with large and small florals adds interest to this decorous quilt. Large and small triangles carry the viewer's eye diagonally. The inner pieced border contains the blocks, while the large-scale border print frames it all. Choose a darker print for the wide border for a slightly different look.*

## Cutting Directions

**Note:** Read assembly directions before cutting patches. All measurements are cut sizes and include ¼" seam allowances. A fat ¼ is an 18" x 20"-22" cut. WOF designates the width of fabric from selvedge to selvedge (approximately 42" wide).

### Cutting for ONE block Unit:

#### Light Print:

- Cut (1) square 6⅞", cut in half diagonally to make 2 half-square triangles. You need 1 triangle for the unit. Set the second triangle aside for another unit.
- Cut (2) squares 2⅞" (3") for HST (Read Step 2 before cutting.)
- Cut (2) squares 2⅞", cut in half diagonally to make 4 half-square triangles. You need 3 triangles for the unit. Set the remaining triangle aside for another unit.

#### Dark Print

- Cut (1) square 6⅞", cut in half diagonally to make 2 half-square triangles. You need 1 triangle for the unit. Set the second triangle aside for another unit.
- Cut (2) squares 2⅞" (3") for HST (Read Step 2 before cutting.)
- Cut (2) squares 2⅞", cut in half diagonally to make 4 half-square triangles. You need 3 triangles for the unit. Set the remaining triangle aside for another unit.

### Cutting for Quilt

#### Fabric A

- Cut (2) side borders 7½" x 68½", cut lengthwise (cut first)
- Cut (6) strips 7½" x 24", cut crosswise from leftover fabric pieced to make 2 top/bottom borders 7½" x 66½" (Read Step 7.)
- Cut patches for Block Units as you desire (This is considered a "light" print.)

#### Fabric B

- Cut (7) squares 5¼", cut in half diagonally twice to make 28 quarter-square triangles
- Cut patches for Block Units as you desire (This is considered a "light" print.)

## Fabric Requirements

|                 |        | Yardage    | Light | Dark  |
|-----------------|--------|------------|-------|-------|
| <b>Fabric A</b> | border | 2 yards    | 808-L | 808-C |
| <b>Fabric B</b> | border | ½ yard     | 812-L | 810-R |
| <b>Fabric C</b> | border | ½ yard     | 812-N | 814-R |
| <b>Fabric D</b> | border | 1 yard     | 816-T | 817-L |
| <b>Lights</b>   | blocks | fat ¼ each |       |       |
|                 | 808-L  | 809-L      | 810-L | 811-L |
|                 | 812-N  | 813-C      | 814-L | 815-N |
|                 | 817-L  |            |       | 812-L |
| <b>Darks</b>    | blocks | fat ¼ each |       |       |
|                 | 808-C  | 809-C      | 810-N | 810-R |
|                 | 811-T  | 812-C      | 813-R | 813-T |
|                 | 814-R  | 815-R      | 816-C | 816-R |
|                 | 817-C  | 817-R      |       | 816-T |
| <b>Binding</b>  |        | ⅝ yard     | 813-R | 813-R |
| <b>Backing</b>  |        | 5¼ yards   | 809-L | 809-C |

#### Fabric C

- Cut (7) squares 5¼", cut in half diagonally twice to make 28 quarter-square triangles
- Cut patches for Block Units as you desire (This is considered a "dark" print.)

#### Fabric D

- Cut (13) squares 5¼", cut in half diagonally twice to make 52 quarter-square triangles
- Cut (2) squares 4⅞", cut in half diagonally to make 4 half-square triangles
- Cut patches for Block Units as you desire (This is considered a "dark" print.)

#### 8 Lights From each:

- Cut patches for approx. 4-5 Block Units
- You need a total of 48 Block Units, including ones made from Fabrics A & B.

#### 16 Darks From each:

- Cut patches for approx. 2-3 Block Units
- You need a total of 48 Block Units, including ones made from Fabrics C & D.

#### Binding

- Cut (8) strips 2½" x WOF for binding

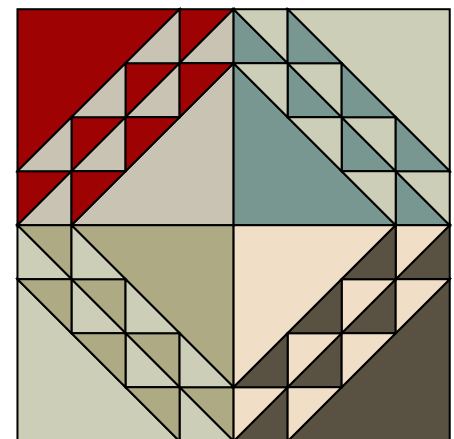
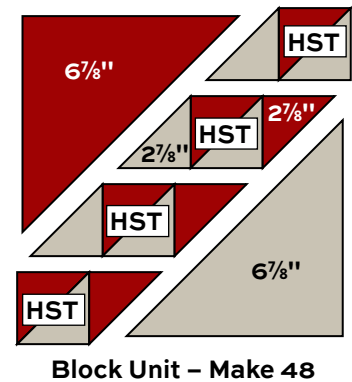
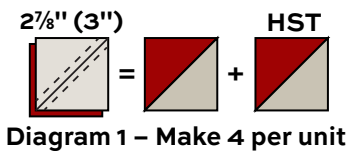
#### Backing

- Cut (2) lengths 38" x 92", pieced to fit quilt top with overlap on all sides

# Tradewinds Tide Quilt

## Making the Quilt

1. The quilt can be made so every Block Unit has a different combination of light and dark prints, or some units can be made alike. Choose a light and a dark print for each Block Unit. Cut patches as listed above for one unit. Note that you may not need every half-square triangle that is cut.
2. The blocks are made with half-square triangles (HST). Use your favorite method to make HST that finish 2", or follow these directions. Squares cut 3" will be trimmed after stitching. Cut the squares 2<sup>7</sup>/<sub>8</sub>" if you do not wish to trim later. Draw a diagonal line on the wrong side of a 2<sup>7</sup>/<sub>8</sub>" (3") light square. With right sides together, position the marked square on top of a dark square. Stitch 1/4" on each side of the diagonal line (Diagram 1). Cut apart on the drawn line. Press the seam allowance toward the darker fabric. The HST should measure 2<sup>1</sup>/<sub>2</sub>". Trim as needed. Make 4 HST alike for each Block Unit.
3. Referring to the Block Unit diagram, arrange the HST and the half-square light and dark 2<sup>7</sup>/<sub>8</sub>" triangles into horizontal rows as shown. Step back to be certain the triangles are turned to match the design. Sew the center patches together into rows, and join the rows. Sew the dark 6<sup>7</sup>/<sub>8</sub>" triangle to one edge and the light triangle to the opposite edge. Make 48 total Block Units.
4. Join 4 Block Units into a square, noting the orientation of light and dark triangles. The block should measure 16<sup>1</sup>/<sub>2</sub>" from edge to edge. Make 12 Blocks, each with 4 different Block Units.
5. Referring to the Quilt Assembly, arrange the blocks into 4 rows of 3 blocks each. Look through the wrong end of binoculars to be sure that the fabrics are dispersed as you wish. Once you are satisfied, join the blocks into rows, and then join the rows.
6. To make the inner pieced border, arrange 8 Fabric B, 8 Fabric C, and 15 Fabric D quarter-square triangles edge to edge to make a side border, noting the alternating colors. Sew to the side of the quilt. Repeat for the opposite side. Likewise, join 6 Fabric B, 6 Fabric C, and 11 Fabric D triangles to make the top border. Sew to the top. Repeat for the bottom border. Sew Fabric D 4<sup>7</sup>/<sub>8</sub>" triangles to each corner.
7. Sew long Fabric A borders to the sides. Join 3 Fabric A 24" border strips end to end. Sew to the top. Trim the ends even with the quilt's raw edge. Repeat for the bottom border.

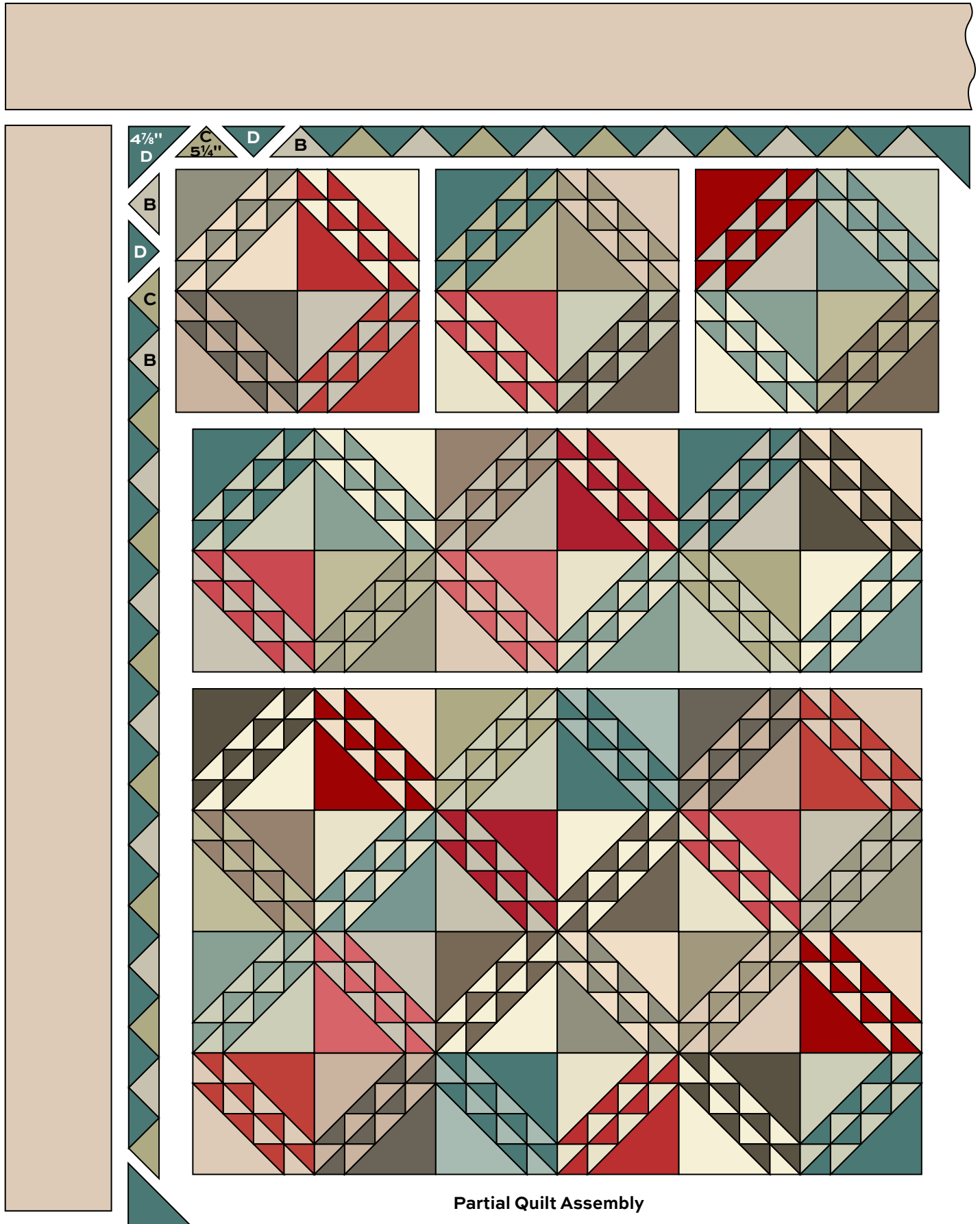


Block – Make 12

## Finishing the Quilt

8. Layer the quilt with batting and backing and baste. Quilt in the ditch around borders and patches. Quilt around the printed motifs. Quilt large triangles as you wish. Bind to finish the quilt.

# Tradewinds Tide Quilt



# Tradewinds RENÉE NANNEMAN



808-C



808-L



809-C



809-L



810-L



810-N



810-R



811-L



811-N



811-T



812-C



812-L



812-N



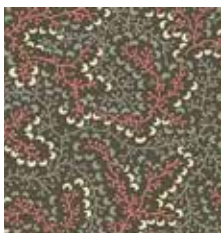
813-C



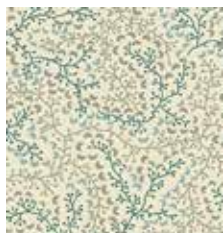
813-R



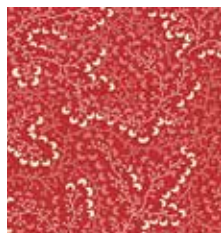
813-T



814-C



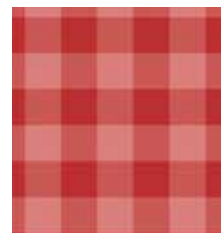
814-L



814-R



815-N



815-R



815-T



816-C



816-R



816-T



817-C



817-L



817-R

All fabrics are used in quilt pattern. Fabrics shown are 100% of actual size.